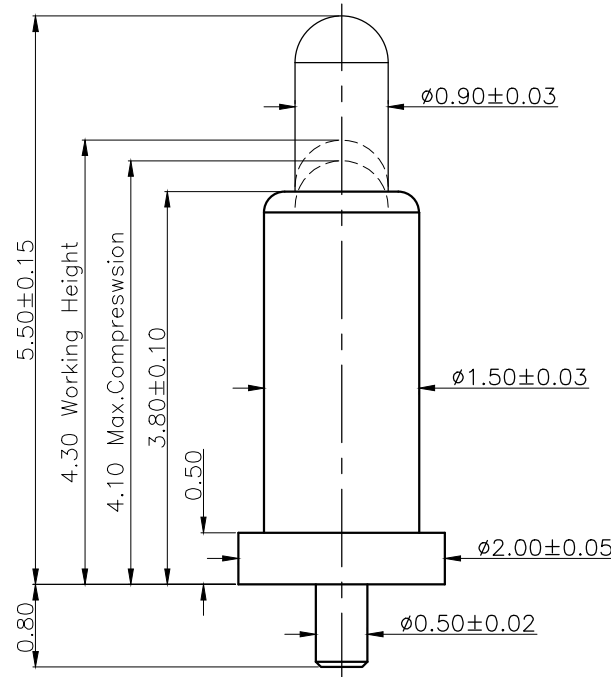
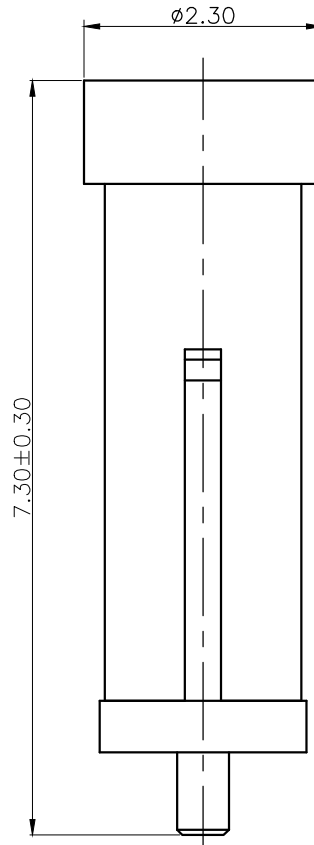


Please Approve this Drawing



|           |  |
|-----------|--|
| Date      |  |
| Signature |  |

| NO. | Part Name | Q'TY | Material                                | Plated surface                 |
|-----|-----------|------|---|--------------------------------|
| 1   | Plunger   | 1    | HBi59                                   | Au 10u" Min. OVER 50~100 U" NI |
| 2   | Barrel    | 1    | HBi59                                   | Au 5u" Min. OVER 50~100 U" NI  |
| 3   | Spring    | 1    | SUS 304                                 | Au 1u" Min. OVER NI            |
| 4   | CAP       | 1    | High temp.Plastic; UL94 V-0 Color Black |                                |



NOTES:

- Electrical
  - .Rated Current & Voltage : DC 12 V ; 1.0A
  - .Contact Resistance: 100 mohm maximum at Working Height(Quiescence)
- Mechanical
  - .Full store: 1.40 mm
  - .Working Store: 1.20 mm
  - .Spring Force: 25gf±5gf at Working Height
  - .Durability:10,000 cycles(minimum)
- Environmental
  - .Operating Temperature: -25°C~+85°C
  - .Humidity Range: 10%RH~90%RH
  - .Salt Spray: 48 Hours
- When the current is greater than 1A then need to increase the time delay circuit(3 second)
- To avoid arcing issue, The adaptor start to power supply after connector mated fully.
- To ensure the best usage,please operate it based on the working height.
- .RoHs&HF compliant product.

|          |   |             |             |          |   |
|----------|---|-------------|-------------|----------|---|
| DRAWN    | LX  | DATE        | 2021.08.04  |          |  Dongguan Promax Electronics Technology Co., Ltd |
| CHECKED  |   | SCALE       | 10:1        | VER. A.0 |   |
| APPROVED |   | TITLE       | T35         |          | Ang:  |
| PROJECT  |  | DRAWING NO. | NC3650-01RA |          | 0 ±1°   |
| SHEET    | 1 of 1  | UNIT        | mm          |          | .0 ±0.5°  |
|          |   |             |             |          | .00 ±0.25°  |
|          |   |             |             |          | Dim: 0 ±0.15  |
|          |   |             |             |          | .0 ±0.10  |
|          |   |             |             |          | .00 ±0.05   |

| VER. | DESCRIPTION | ECN NO. | DATE |
|------|-------------|---------|------|
|      |             |         |      |
|      |             |         |      |